

Instruction For Use

DESCRIPTION

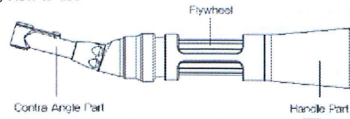
The Lingual Driver is designed to be used for inserting and removing Dual-Top Temporary Anchorage Devices (TADs) within the maxillary and mandibular jawbone areas. The instrument should only be used by licensed and qualified dental practitioners.

DIRECTION FOR USE

A) Before use

- ① Inspect proper use and assembling, cleaning and sterilization state of the product.
- ② Clean the contra angle component, followed by lubrication, then sterilization with handle part.
(After assembly the handle part and contra angle part, they can be sterilization, and each parts must be sterilized prior use.)
The sterilization method and conditions are recommended as follows:
 - Sterilization method: Steam Sterilization / • Sterilization conditions: 15-minutes at 132°C

B) How to use

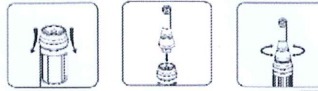


- ① After sterilization, insert the contra angle part into handle part in desirable direction (see assembling of contra angle part.)
- ② Fasten implant device using the suitable driver and shaft.
- ③ Turn flywheel clockwise (to the right) for insertion and counterclockwise (to the left) for removal.

C) Cleaning and maintenance after Use

- ① After disjoint contra angle part and handle part, cleaning and dry.
- ② After check the cleaning condition of device, the contra angle part should be progress the lubrication process.
(Refer to the "Cleaning and Lubrication of Contra Angle Part")
- ③ After assembly of device, check the device function.
- ④ After sterilization, store the device in a cool and dry environment.

※ How to assemble lubrication adapter



- ① Push holder cap downward.
- ② Insert contra angle part into lubrication adapter.
- ③ Turn contra angle part to the left or right slightly to return holder cap to its original position and confirm proper assembly.
- ④ After lubrication, push holder cap downward and remove the contra angle part separately.

※ Cleaning and Lubrication of Contra Angle Part

- ① Do ultrasonic cleaning.
 - ② Using an air pressure syringe, clean/dry the head and bottom interface of the contra angle part to remove any remaining water and foreign material.
 - ③ Attach the lubrication adapter and lubricate joints using oil based lubricator. Clean/dry the head and bottom interface of the contra angle part using air pressure syringe to remove any excess oil. (see assembling of lubrication adapter.)
 - ④ Do steam sterilization.
- Note: Handle contra angle part with care. Any major impact can damage the device components.

※ How to assemble lubrication adapter



- ① Push holder cap downward.
- ② Put contra angle part.
- ③ Turn contra angle part to the left or right slightly to return holder cap to its original place and confirm status of assembling.
- ④ After lubrication, push holder cap downward and then take off contra angle part separately.

CAUTIONS (WARNING)

1. Cautions in the use

- ① Qualified physicians only are permitted to make use of the product.
- ② Before use, wash the product off and sterilize it in accordance with standards of sterilization methods and conditions.
- ③ 111-LD-020, lubrication is required. Lubricate device in accordance with lubrication method and instructions.
- ④ Only the screwdriver shaft made by the manufacturer (Jell Medical Corporation) must be used with Lingual Driver.
- ⑤ Sterilize the driver shaft by manufacturer's recommended sterilization method prior to use.
- ⑥ If you do not follow the manufacturer's recommended maintenance methods (Sterilization method, Cleaning method, Oiling method), the products have a bad effect for the life.

2. Storage conditions and methods: Recommended to store device in cool and dry environment.

SYMBOL DESCRIPTION

REF: Reference / Article number

LOT: Lot / Batch number

☐: Date of manufacturer

⚠: CAUTION

♁: Manufacturer

⊗: Do not use if package is damaged

MANUFACTURER

JEIL MEDICAL CORPORATION #702, 55, Digital-ro 34-gil (Previously Kohn Science Vally 2nd, Guro-Dong), Guro-Gu, Seoul, 152-723, Korea
Tel : +82 2 850 3500 / Fax : +82 2 850 3535 / <http://www.jellmed.co.kr>